

LIGHT

LIGHT ELECTRONICS CO., LTD.

Electro-Optical Characteristics



参数名称		符号	数值	单位



Electro-Optical Characteristics (Temperature=25°C)

参数名称	符号	条件	颜色	最小值	典型值	最大值	单位
							μ
	λ						
	Δλ						
	θ						

以上 厂商

manufacturer.

LIG

LIGHT ELECTRONICS CO., LTD.

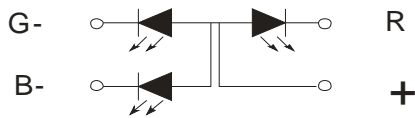
Reliability Test Items And Conditions

实验项目	参考标准	实验条件	时间	样品数	判据
		←→			

Product design and operational recommendation

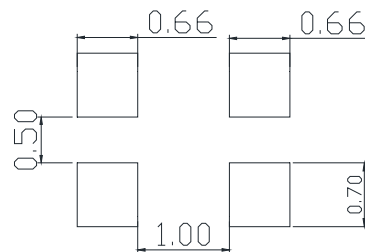
1 mm

Product design Unit: mm



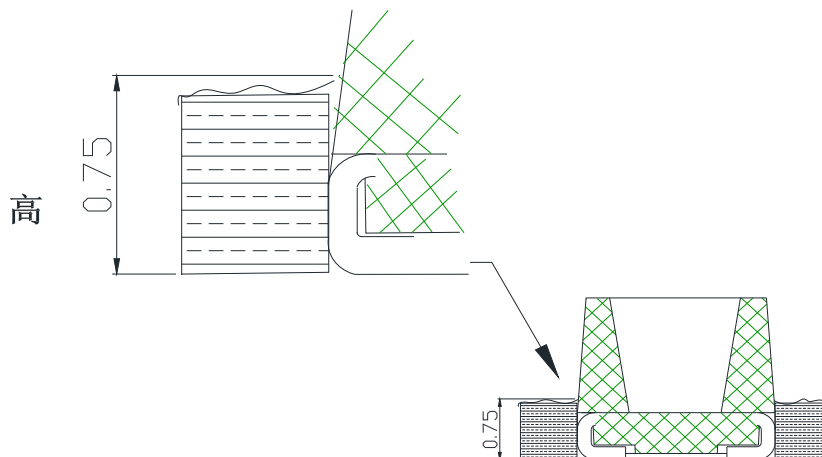
2 mm

Recommended soldering pad (Unit: mm)



3 0.75mm

Recommendation for glue filling: filling height must be higher than or equal to 0.75mm



1

Packaging (1)

◇ Carrier Tape

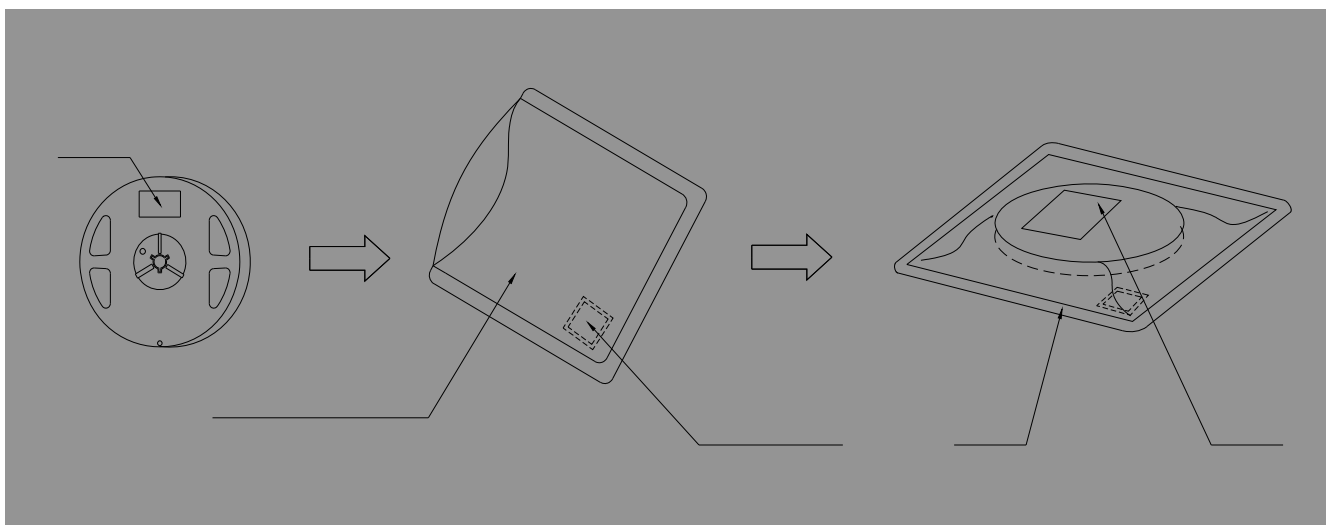
◇

2

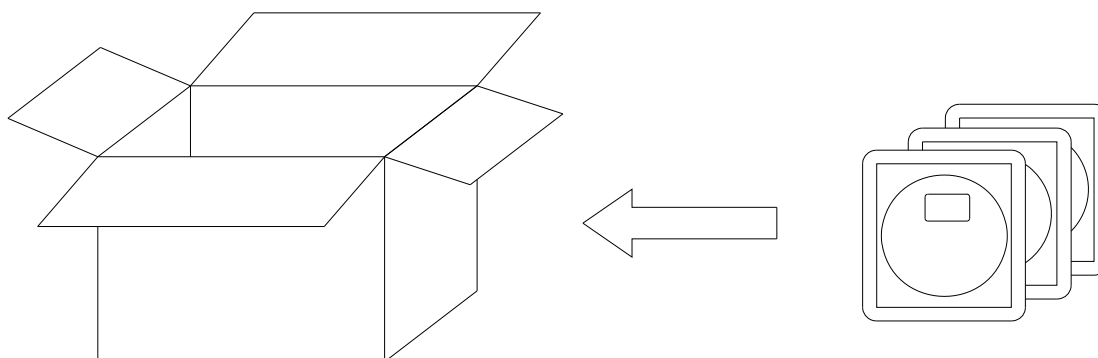
Packaging(2)



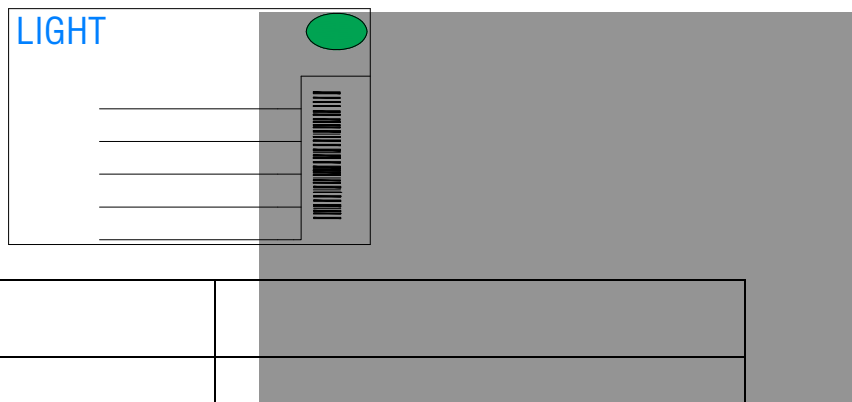
Moisture Proof and Anti-Electrostatic Foil Bag



Cardboard Box

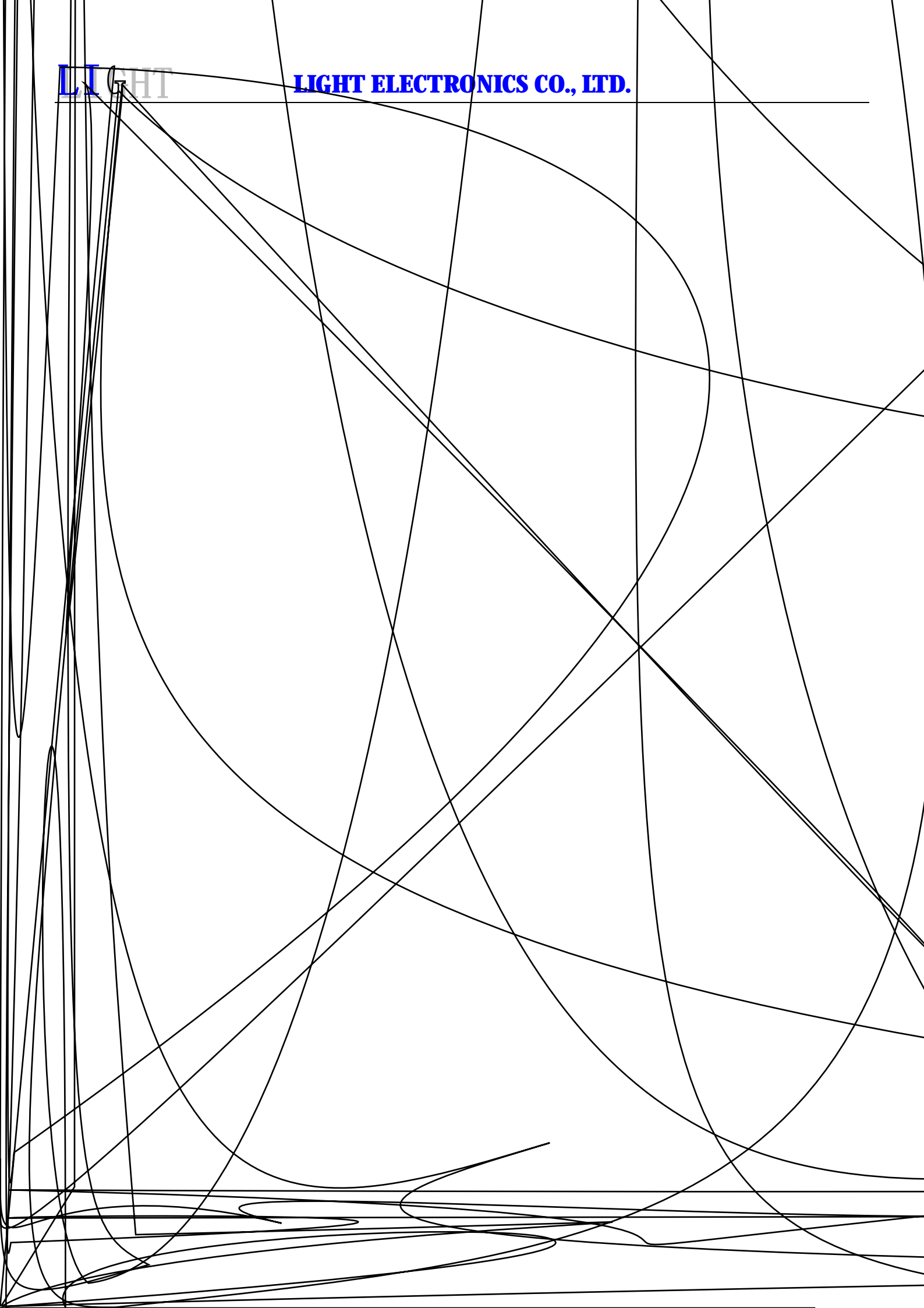


Label Explanation



LIHT

LIGHT ELECTRONICS CO., LTD.



2



Guideline for Soldering (2)

BØDLED6ED

LED

(1)

Precautions (1)

1.

Storage

-
-
-
-
-

2.

Static Electricity

-
-
-

(2)

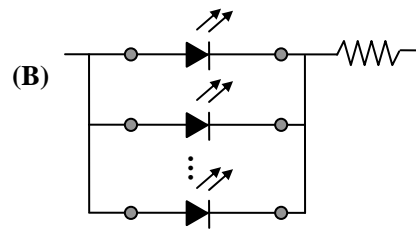
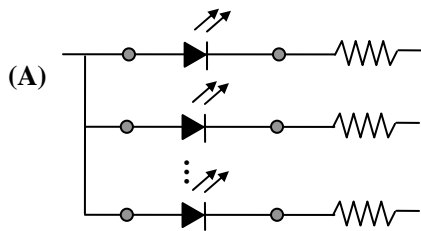
Precautions (2)

3.

Design Consideration

-

-



-

4.

Reverse voltage protection

-

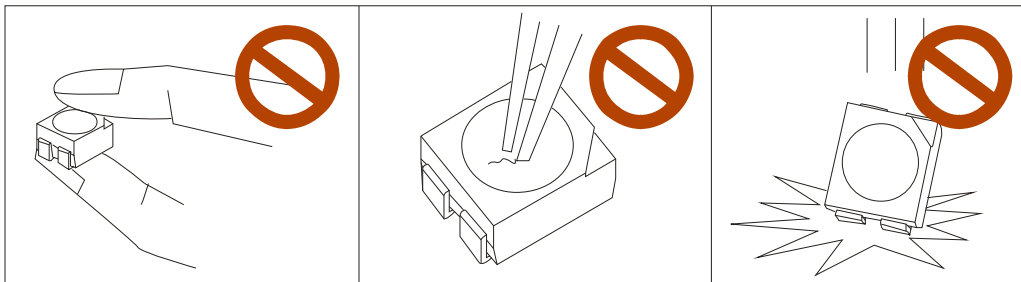
5.

The safe temperature for LEDs working

-

6.

-



-